



**ID SCULPTURE**

PLAY. CLIMB. EXPLORE.



B E N  
S H A F F E R  
R E C R E A T I O N

973-663-2021

[www.benshaffer.com](http://www.benshaffer.com)



We're reinventing the playground



“If you want to do something nice for a child,  
give them an environment where they can touch  
things as much as they want.”

- Buckminster Fuller, 1972



**In our world  
the impulse to play,  
climb and explore does  
not end with childhood.**

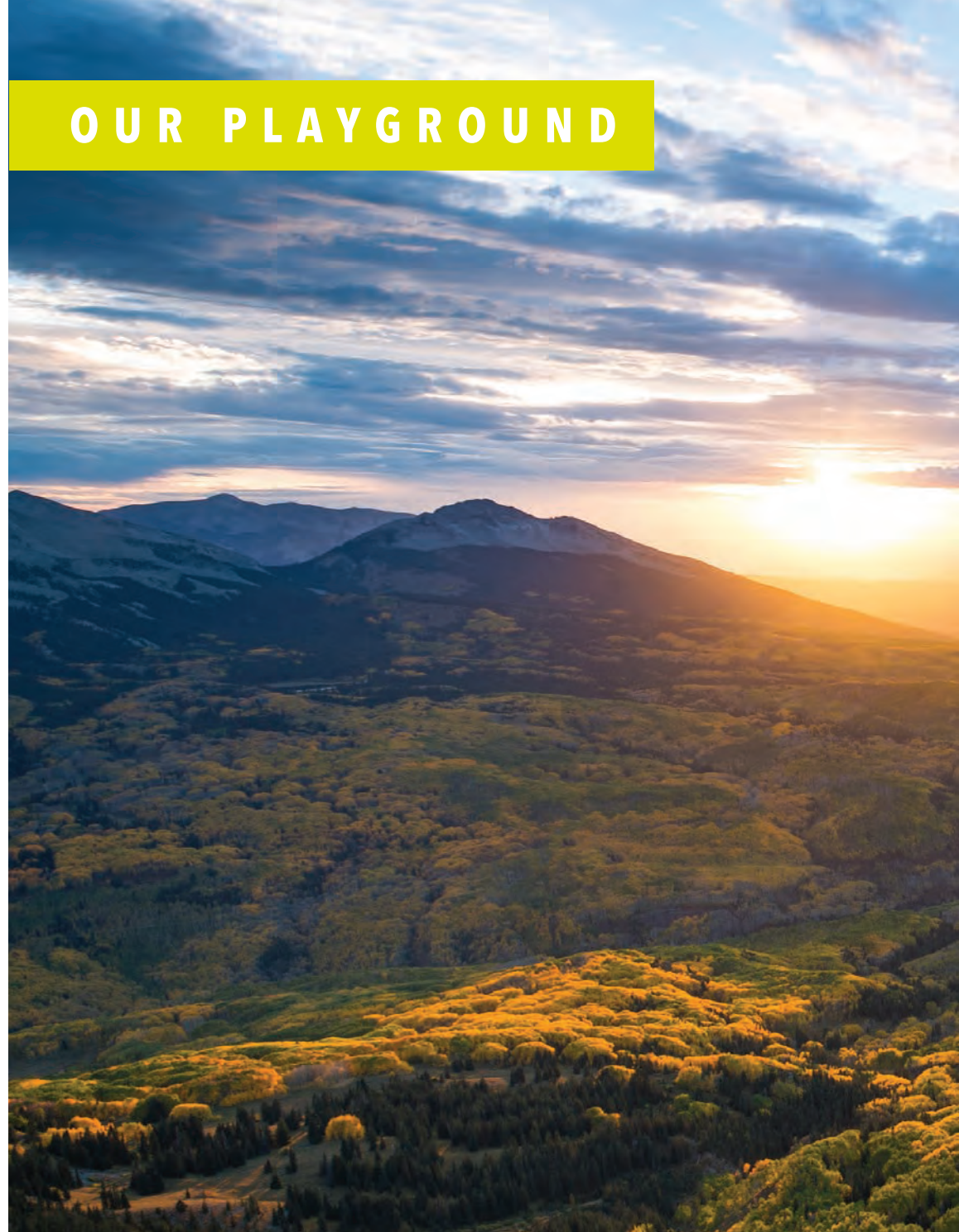
Our obsession with play-based learning has its roots in the mountains and is born out of a love for adventure. We are climbers, skiers, boaters, mountain bikers and hikers, who explore the natural world with our family and friends.

True to these roots, our team of talented designers and fabricators use this intimacy with the outdoors to create nature inspired play sculptures that are authentic down to the smallest detail.

**Home Sweet Home in the Elk Mountains of Colorado**

**[idsculpture.com](http://idsculpture.com)**

**OUR PLAYGROUND**





# ID SCULPTURE

PLAY. CLIMB. EXPLORE.







# WHAT WE BRING TO EVERY PLAYGROUND

ID Sculpture is the industry leader in meeting the developmental needs of children through climbing activities. We do this by combining carefully designed physical challenges with imaginative play and a commitment to our core principals.

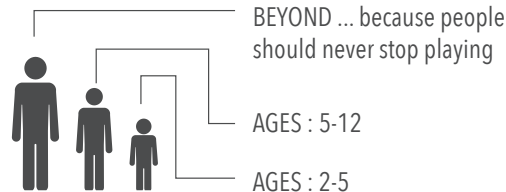
## We believe :

- Kids thrive when they feel an authentic sense of adventure and can safely explore their limits
- That nothing fosters learning like imagination
- Every project is local and should reflect the spirit of its community
- Everyone should have access to play; universal design should be a part of all playgrounds
- Playgrounds should appeal to adults as much as children
- Collaboration is the cornerstone of good design
- As stewards of the environment, we have a responsibility to minimize our impacts and build the most durable products possible

“If you are looking for a collaborative design process with a group of creative, innovative design professionals for a one-of-a-kind children’s play environment, then you need to be teaming with ID Sculpture.”

– Kerry White, RLA, ASLA, LEED TM & Principal, Urban Play Studio

The symbols below indicate the age appropriateness of each component based on ASTM 1487.



The IPEMA Certified logo will be used to signify products that are IPEMA certified to ASTM F1487.



# TECHNOLOGY + ENGINEERING

ID Sculpture combines old world sculptural techniques with modern digital technology. This gives us the power to realize virtually any theme or form.





## HAND CRAFTED ACCURACY

ID Sculpture's marriage of digital fabrication and handcraft allows us to create products that are unique to your needs while maintaining accurate detail at all scales.

Throughout the creative process, we use tried and true technology to make sure we're creating structures and designs that match your expectations. We use laser scanning, Haptic modeling and 3D visualization to test our concepts three-dimensionally. Once a sculpture is approved, we use CNC machines to exactly replicate the approved design. Finally, our talented team of artists hand sculpt and finish the surface.

This method allows us to work quickly and accurately at a variety of scales while maintaining complete creative control—the options for customization are nearly limitless.



# PLAY

ID Sculpture creations are unlike any other playground feature. They instantly attract kids, get them moving and inspire them to come back again and again. You'll see our love of nature in our organic forms and realistic textures. You can choose a signature sculpture from our catalog, or we can help you realize your vision for a custom playground or themed environment. Check out our popular Woodlands and TerraCritters lines.

# TERRA CRITTERS

Kids love climbing, but they also love animals. This product line is all about giving them both with a series of playful animal sculptures just the right size for clambering, climbing, or cuddling. We can even customize color and finishes to reflect local habitats and species.



## Caterpillar

MODEL : TC018

DIMENSIONS : 23' 5" X 4' 11" X 4' 9"

USE ZONE : 35' 5" X 16' 11"

AGES : 2-5



Meadow Crest Playground • Renton, WA

[idsculpture.com](http://idsculpture.com)



### Snapping Turtle

MODEL : TC030  
 DIMENSIONS : 6' 9" X 4' 11" X 2'  
 USE ZONE : 18' 9" X 16' 11"  
 AGES : 2-5



### Painted Turtle

MODEL : TC029  
 DIMENSIONS : 6' X 4' 6" X 1' 10"  
 USE ZONE : 18' X 16' 6"  
 AGES : 2-5



### Box Turtle

MODEL : TC028  
 DIMENSIONS : 6' 2" X 4' 4" X 2' 4"  
 USE ZONE : 18' 2" X 16' 4"  
 AGES : 2-5



### Trout

MODEL : TC013  
 DIMENSIONS : 5' 1" X 3' 3" X 3' 10"  
 USE ZONE : 17' 1" X 15' 3"  
 AGES : 2-5



### Tree Frog

MODEL : TC003  
 DIMENSIONS : 6' X 5' 11" X 3' 3"  
 USE ZONE : 18' X 17' 11"  
 AGES : 2-5



### Tick Tock Croc

MODEL : TC022  
 DIMENSIONS : 7' 1" X 3' X 2' 3"  
 USE ZONE : 19' 1" X 15'  
 AGES : 2-5





### Bear Cub

MODEL : TC001  
DIMENSIONS : 3' 10" X 7' 8" X 3' 9"  
USE ZONE : 15' 10" X 19' 8"  
AGES : 2-5



### Bison

MODEL : TC004  
DIMENSIONS : 7' 6" X 4' 9" X 3' 8"  
USE ZONE : 19' 6" X 16' 9"  
AGES : 2-5



### Great Falls Dragon

MODEL : TC021  
DIMENSIONS : 7' 4" X 2' 8" X 4' 2"  
USE ZONE : 19' 4" X 14' 8"  
AGES : 2-5



### Pig

MODEL : TC008  
DIMENSIONS : 7' 6" X 3' 2" X 3' 6"  
USE ZONE : 19' 6" X 15' 2"  
AGES : 2-5



### Cow

MODEL : TC007  
DIMENSIONS : 8' X 3' 2" X 3'  
USE ZONE : 20' X 15' 2"  
AGES : 2-5



### Basset Hound

MODEL : TC014  
DIMENSIONS : 6' 6" X 4' 7" X 5'  
USE ZONE : 18' 6" X 16' 7"  
AGES : 2-5





“A creative playground is only half a creative space; it’s also a creative attitude.”

– Jay Beckwith, 1973



### Caterpillar Papilio

MODEL : TC032

DIMENSIONS : 9' 11" X 2' 4" X 1' 11"

USE ZONE : 21' 11" X 14' 4"

AGES : 2-5



### Caterpillar Anise

MODEL : TC033

DIMENSIONS : 7' 7" X 2' 5" X 2' 10"

USE ZONE : 19' 7" X 14' 5"

AGES : 2-5



### Salamander

MODEL : TC011

DIMENSIONS : 13' 11" X 4' 3" X 1' 8"

USE ZONE : 25' 11" X 16' 3"

AGES : 2-5



### Humpback Whale

MODEL : TC023

DIMENSIONS : 13' 9" X 7' 6" X 3' 6"

USE ZONE : 25' 9" X 19' 6"

AGES : 2-5





Community Learning Center at Ma'ili • Wai'anae, HI

[sculpture.com](http://sculpture.com)

## PLAY SCULPTURES

Operating at the intersection of art and play, we go beyond theming, with an elegant collection of sculptural climbers ranging from the larger than life to the otherworldly.



### Telo Climber

MODEL : SC029

DIMENSIONS : 7' 10" X 4' 2" X 6'

USE ZONE : 19' 10" X 16' 2"

AGES : 5-12





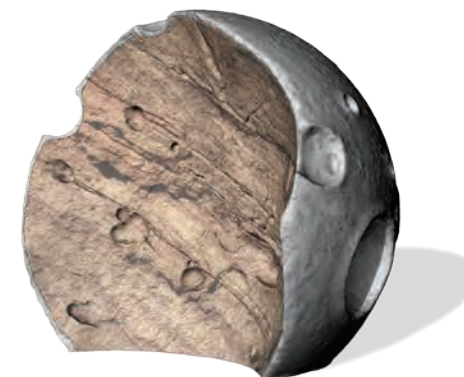
**Saturn Climber**

MODEL : SC008  
 DIMENSIONS : 7' 6" X 7' 6" X 3' 6"  
 USE ZONE : 19' 6" X 19' 6"  
 AGES : 2-5



**Mitosis #1**

MODEL : SC003  
 DIMENSIONS : 10' 9" X 6' 7" X 8'  
 USE ZONE : 22' 9" X 18' 7"  
 AGES : 5-12 + BEYOND



**Half Moon**

MODEL : SC001  
 DIMENSIONS : 8' X 5' 11" X 6' 11"  
 USE ZONE : 20' X 17' 11"  
 AGES : 5-12 + BEYOND



**Mini Mite**

MODEL : SC027  
 DIMENSIONS : 4' X 2' 8" X 4'  
 USE ZONE : 16' X 14' 8"  
 AGES : 2-5



**Chroma Climber**

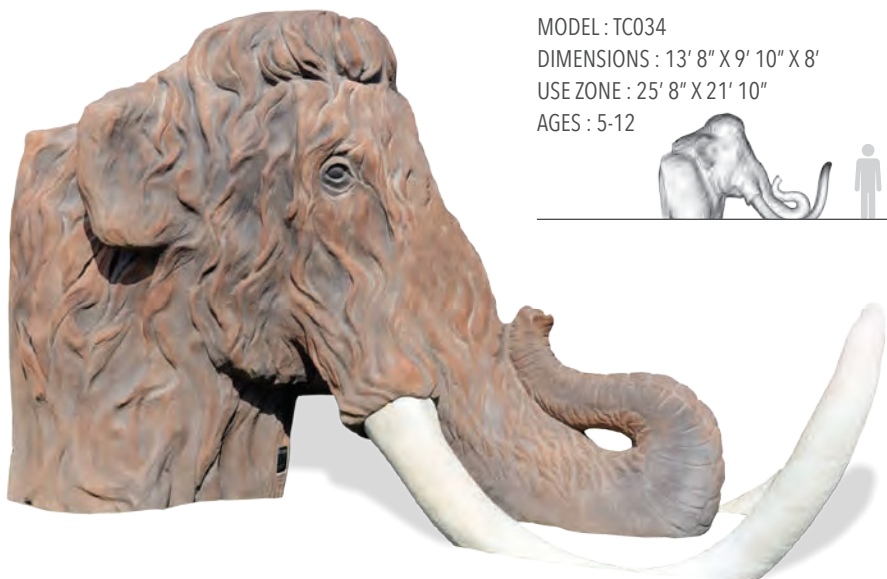
MODEL : SC026  
 DIMENSIONS : 6' 2" X 4' X 6'  
 USE ZONE : 18' 2" X 16'  
 AGES : 5-12



**Kinesis Climber**

MODEL : SC030  
 DIMENSIONS : 7' X 4' 9" X 5' 8"  
 USE ZONE : 19' X 16' 9"  
 AGES : 5-12





## Mammoth

MODEL : TC034

DIMENSIONS : 13' 8" X 9' 10" X 8'

USE ZONE : 25' 8" X 21' 10"

AGES : 5-12



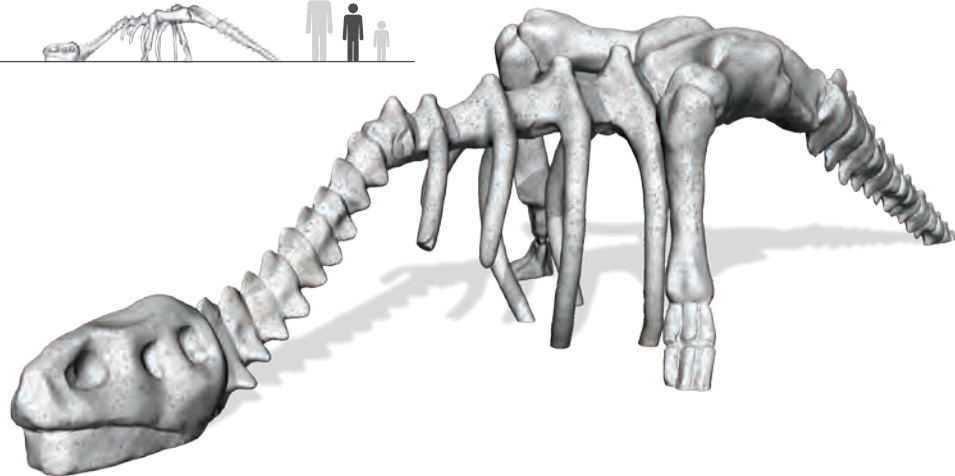
## T-Rex

MODEL : SC004

DIMENSIONS : 18' 3" X 6' X 4' 6"

USE ZONE : 30' 3" X 18'

AGES : 5-12



# DIG BONES

## Hips + Legs

MODEL : AP003-2  
DIMENSIONS : 1' 7" X 2' 8"  
AGES : 2-5



## Vertebrae

MODEL : AP003-1  
DIMENSIONS : 1' 3" X 2' 9"  
AGES : 2-5



## Ribs

MODEL : AP003-3  
DIMENSIONS : 2' X 2' 5"  
AGES : 2-5



## Skull

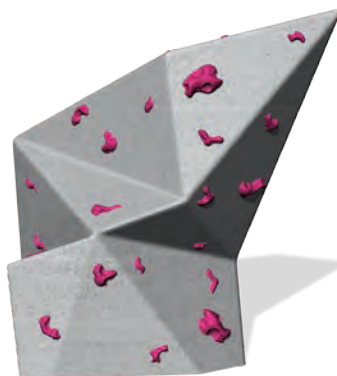
MODEL : AP003-4  
DIMENSIONS : 2' X 2' 8"  
AGES : 2-5





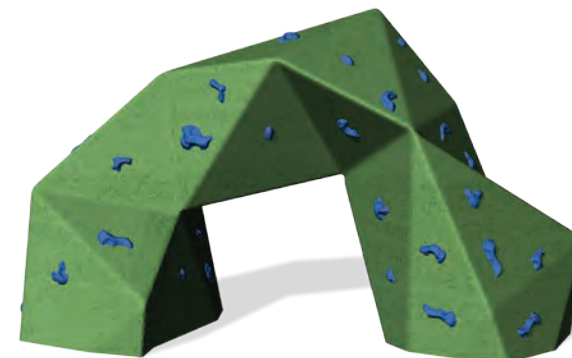
### Poly Spire

MODEL : SC032  
DIMENSIONS : 2' 9" X 2' 9" X 6' 1"  
USE ZONE : 14' 9" X 14' 9"  
AGES : 5-12



### Poly Climber

MODEL : SC033  
DIMENSIONS : 5' 11" X 5' 2" X 6' 6"  
USE ZONE : 17' 11" X 17' 2"  
AGES : 5-12



### Poly Arch

MODEL : SC034  
DIMENSIONS : 10' 3" X 4' 7" X 6' 1"  
USE ZONE : 22' 3" X 16' 7"  
AGES : 5-12



### Grass Blade *small*

MODEL : SC018  
DIMENSIONS : 6' 4" X 1' 8" X 2' 8"  
USE ZONE : 18' 4" X 13' 8"  
AGES : 2-5



### Grass Blade *large*

MODEL : SC019  
DIMENSIONS : 7' 7" X 2' 3" X 4'  
USE ZONE : 19' 7" X 14' 3"  
AGES : 2-5



### Grass Blade *balance*

MODEL : SC020  
DIMENSIONS : 9' 2" X 1' 4" X 1' 6"  
USE ZONE : 21' 2" X 13' 4"  
AGES : 2-5





## Artist Highlight Sharon Engelstein

In 2007, when Sharon wanted to translate what was in her studio into landscape scale public art installations, she came to ID Sculpture. Since then, our ongoing collaboration has yielded several installed projects. Intrigued by the relationship between sculpture and play, Sharon now designs her creations with interactivity in mind, including the recently installed "Tall Ma" at Midtown Park in Houston, TX.



*"Mamadillidiida"*  
Hermann Park  
Conservancy  
Houston, TX

### Mini Mobius

MODEL : SC005  
DIMENSIONS : 7' 11" X 6' 9" X 3' 9"  
USE ZONE : 19' 11" X 18' 9"  
AGES : 2-12



### The Drift

MODEL : SC012  
DIMENSIONS : 10' X 7' 7" X 7' 11"  
USE ZONE : 22' X 19' 7"  
AGES : 5-12





## Rock Sand Table

MODEL : SF003

DIMENSIONS : 15' X 8' X 2' 2"

USE ZONE : 27' X 20'

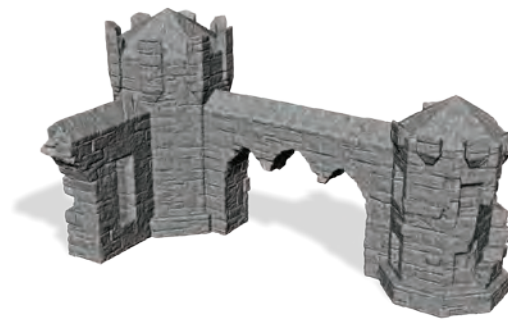
AGES : 2-12







Aurora Reservoir Playground • Aurora, CO



### Castle Climber

MODEL : SC031

DIMENSIONS : 13' 9" X 7' 6" X 7'

USE ZONE : 25' 9" X 19' 6"

AGES : 5-12



### Third Sense

MODEL : SC002

DIMENSIONS : 7' 6" X 6' 9" X 7' 9"

USE ZONE : 19' 6" X 18' 9"

AGES : 5-12 + BEYOND





### Saddle Climber

MODEL : SC036  
DIMENSIONS : 8' 2" X 3' 6" X 3' 8"  
USE ZONE : 20' 2" X 15' 6"  
AGES : 2-12



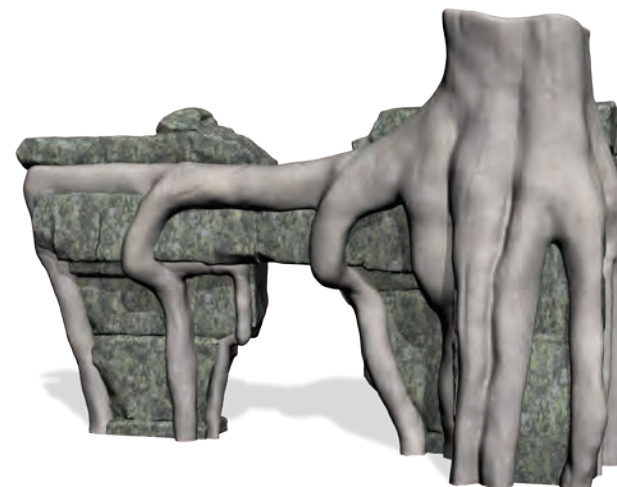
### Lighthouse Rock

MODEL : SC022  
DIMENSIONS : 9' X 5' X 10'  
USE ZONE : 21' X 17'  
AGES : 5-12



### Train Tunnel

MODEL : SC025  
DIMENSIONS : 11' 2" X 8' X 6' 2"  
USE ZONE : 23' 2" X 20'  
AGES : 5-12



### Lost City Climber

MODEL : SC035  
DIMENSIONS : 12' 4" X 6' 9" X 8'  
USE ZONE : 24' 4" X 18' 9"  
AGES : 5-12





### Mayan Wall

MODEL : SC013

DIMENSIONS : 12' 3" X 7' 9" X 7' 11"

USE ZOEN : 24' 3" X 19' 9"

AGES : 5-12



Dry Gulch Park • Lakewood, CO

# WOODLANDS

When the hard lines and polished surfaces of contemporary play structures don't fit your vision, head to the Woodlands for a more natural aesthetic. This line of unique sculptures is inspired by nature's playground, with organic shapes and textures.

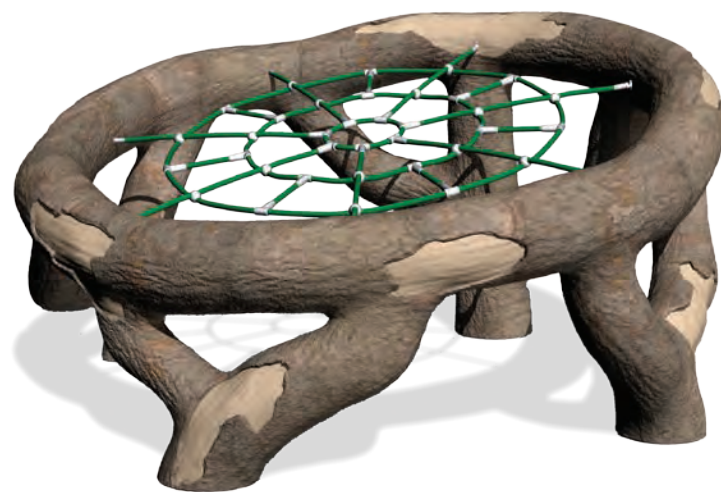
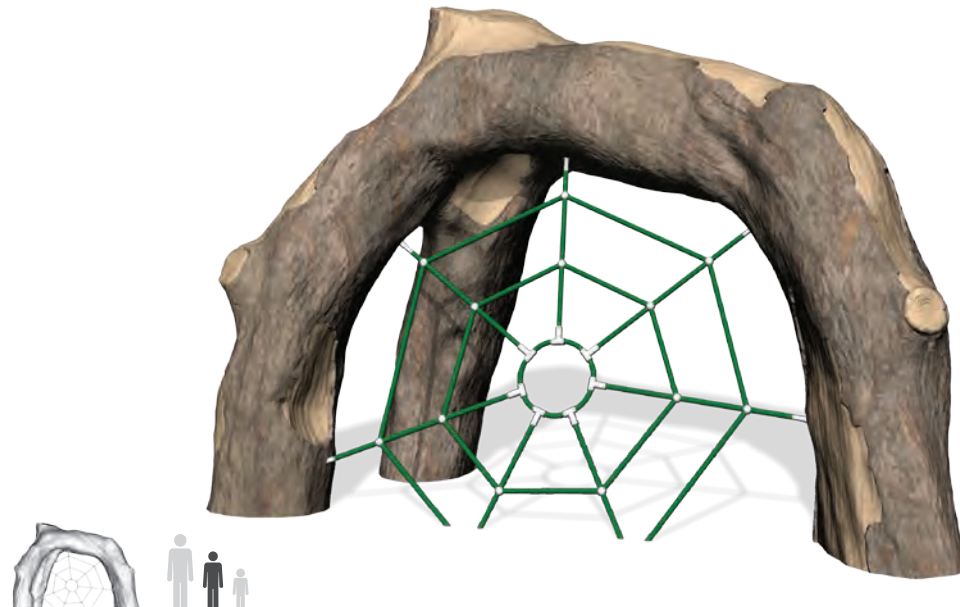


“Interplay between the object and the child makes his total world — play. He exploits the vitality of his environment and draws upon his imagination to create his world.”

– M. Paul Friedberg, 1970

### Web Climber

MODEL : AP001  
DIMENSIONS : 10' 6" X 4' 10" X 7'  
USE ZONE : 22' 6" X 16' 10"  
AGES : 5-12



### Charlotte's Web

MODEL : AP005  
DIMENSIONS : 8' X 7' 11" X 4' 7"  
USE ZONE : 20' X 19' 11"  
AGES : 2-12





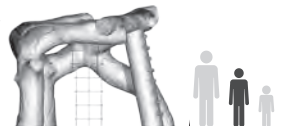
### Eagle's Nest

MODEL : AP010

DIMENSIONS : 13' X 14' 5" X 9' 7"

USE ZONE : 25' X 26' 5"

AGES : 5-12





## Log Balance Course

MODEL : AP015

DIMENSION : 19' 8" X 6' 2" X 3' 7"

USE ZONE : 31' 8" X 18' 2"

AGES : 2-12



*\*Also available in rock versions*



## Stepping Forms *small*

MODEL : SF002-SM

DIMENSIONS : 18" TALL X 10" DIA

AGES : 2-12



## Stepping Forms *medium*

MODEL : SF002-MD

DIMENSIONS : 18" TALL X 18" DIA

AGES : 2-12



## Stepping Forms *large*

MODEL : SF002-LG

DIMENSIONS : 18" TALL X 28" DIA

AGES : 2-12





### Hollow Log

MODEL : AP008  
DIMENSIONS : 6' X 4' 3" X 2' 8"  
USE ZONE : 18' X 16' 3"  
AGES : 2-5



### Balance Log

MODEL : AP009  
DIMENSIONS : 12' 6" X 4' X 1' 2"  
USE ZONE : 24' 6" X 16'  
AGES : 2-5



## SITE FURNISHINGS



### Sandstone Bench

MODEL : SF001  
DIMENSIONS : 2' 1" X 5' 10" X 1' 5"



### Split Log Bench

MODEL : SF004  
DIMENSIONS : 6' X 2' 2" X 1' 6"



### Stump Table

MODEL : SF005  
DIMENSIONS : 6' 8" X 3' X 2' 6"







**Timber!**

MODEL : AP011  
DIMENSIONS : 21' X 8' 7" X 5'  
USE ZONE : 33' X 20' 7"  
AGES : 2-12





## Home Tree

MODEL : AP004

DIMENSIONS : 11' 5" X 6' 3" X 6' 4"

USE ZONE : 23' 5" X 18' 3"

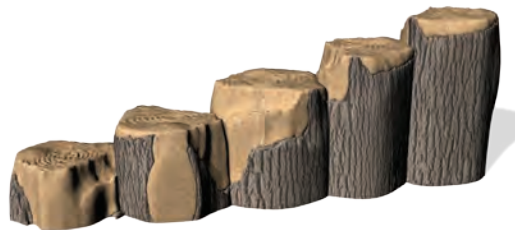
AGES : 5-12





### Linkin' Log

MODEL : AP031  
 DIMENSIONS : 7' 2" X 3' X 2' 4"  
 USE ZONE : 19' 2" X 15'  
 AGES : 2-12



### Plyo Stump

MODEL : AP014  
 DIMENSIONS : 8' 9" X 2' X 3' 1"  
 USE ZONE : 20' 9" X 14'  
 AGES : 2-12



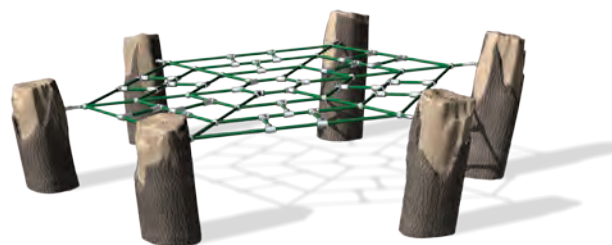
### Staggered Stumps

MODEL : AP020  
 DIMENSIONS : 6' 10" X 3' 2" X 3' 1"  
 USE ZONE : 18' 10" X 15' 2"  
 AGES : 2-12



### ADA Transfer Station

MODEL : AP030  
 DIMENSIONS : 3' 11" X 3' 6" X 3' 5"  
 USE ZONE : 15' 11" X 15' 6"  
 AGES : 2-12



### Hickory Hammock

MODEL : AP006  
 DIMENSIONS : 8' 10" X 10' 1" X 2' 10"  
 USE ZONE : 20' 10" X 22' 1"  
 AGES : 5-12



### Log Fort

MODEL : AP033  
 DIMENSIONS : 11' 2" X 8' X 5'  
 USE ZONE : 23' 2" X 20'  
 AGES : 2-12



# THE VINES



## Washington Vine

MODEL : AP023  
DIMENSIONS : 8' X 5' 4" X 2' 10"  
USE ZONE : 20' X 17' 4"  
AGES : 2-5



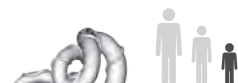
## Sunrise Vine

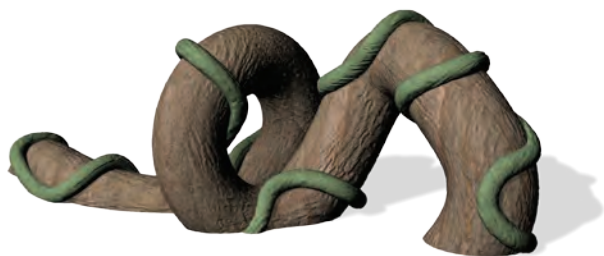
MODEL : AP024  
DIMENSIONS : 8' 6" X 5' 7" X 3' 7"  
USE ZONE : 20' 6" X 17' 7"  
AGES : 2-5



## Smith Vine

MODEL : AP022  
DIMENSIONS : 6' 9" X 9' X 4' 6"  
USE ZONE : 18' 9" X 21'  
AGES : 2-5





### Bowman Vine

MODEL : AP029  
 DIMENSIONS : 9' X 3' 1" X 2' 11"  
 USE ZONE : 21' X 15' 1"  
 AGES : 2-5



### Golden Vine

MODEL : AP028  
 DIMENSIONS : 7' 2" X 5' 7" X 2' 10"  
 USE ZONE : 19' 2" X 17' 7"  
 AGES : 2-5



### Huff Lane Vine

MODEL : AP021  
 DIMENSIONS : 12' 6" X 4' 7" X 4' 2"  
 USE ZONE : 24' 6" X 16' 7"  
 AGES : 2-5



### Lakewood Vine

MODEL : AP027  
 DIMENSIONS : 3' 9" X 7' 11" X 2' 4"  
 USE ZONE : 15' 9" X 19' 11"  
 AGES : 2-5



### Melrose Vine

MODEL : AP026  
 DIMENSIONS : 3' 5" X 9' 1" X 2' 11"  
 USE ZONE : 15' 5" X 21' 1"  
 AGES : 2-5



### Perry Vine

MODEL : AP025  
 DIMENSIONS : 9' 4" X 4' 3" X 3' 3"  
 USE ZONE : 21' 4" X 16' 3"  
 AGES : 2-5





“Our highest endeavor must be to develop free human beings who are able of themselves to impart purpose and direction to their lives. The need for imagination, a sense of truth, and a feeling of responsibility – these three forces are the very nerve of education.”

– Rudolph Steiner, 1919

# CLIMB

We believe people are their strongest and most confident when they climb. That's why ID Sculpture is committed to offering the most authentic, natural climbing experiences available.

# PLAYGROUND ROCK CLIMBERS

Nobody builds boulders and kids' climbing features like ID Sculpture. Our kids' climbers are nature-inspired, offering multiple routes for every ability, from a child learning to scramble to a budding young adventurer. With our proprietary fabrication process, we can match any type of geology and provide limitless options for color, contour and finished texture.







### Palisades Boulder

MODEL : CB001  
DIMENSIONS : 13' X 6' 6" X 8' 2"  
USE ZONE : 25' X 18' 6"  
AGES : 5-12 + BEYOND



### Erosion Boulder

MODEL : CB004  
DIMENSIONS : 8' 7" X 12' 5" X 8'  
USE ZONE : 20' 7" X 24' 5"  
AGES : 5-12 + BEYOND





### Sandstone Arch

MODEL : CB005  
DIMENSIONS : 11' 8" X 6' 11" X 5' 10"  
USE ZONE : 23' 8" X 18' 11"  
AGES : 5-12



### Sandstone Boulder

MODEL : CB006  
DIMENSIONS : 6' 3" X 4' 8" X 5' 8"  
USE ZONE : 18' 3" X 16' 8"  
AGES : 5-12



### 6 by Boulder

MODEL : CB007  
DIMENSIONS : 6' 7" X 5' 4" X 6' 6"  
USE ZONE : 18' 7" X 17' 4"  
AGES : 5-12



### Transition Boulder

MODEL : CB008  
DIMENSIONS : 6' 1" X 4' 1" X 6' 1"  
USE ZONE : 18' 1" X 16' 1"  
AGES : 5-12





### Hoodoo Arch

MODEL : CB010  
 DIMENSIONS : 7' 5" X 11' 3" X 8'  
 USE ZONE : 19' 5" X 23' 3"  
 AGES : 5-12 + BEYOND



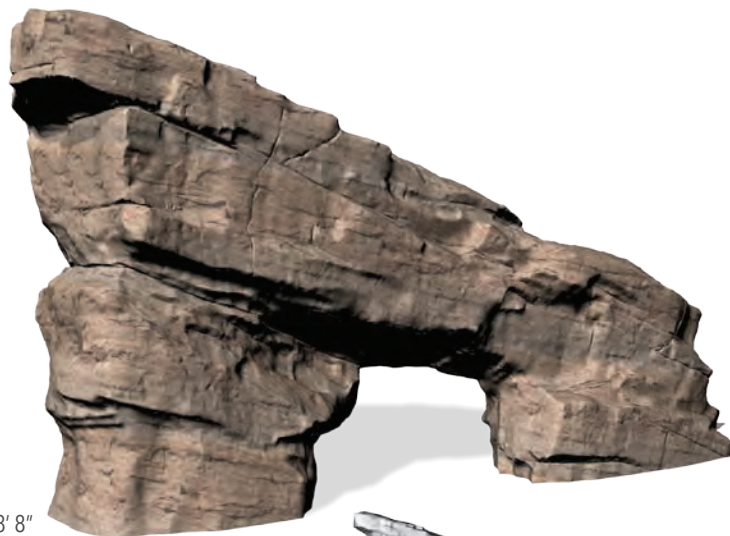
### Skyland Boulder

MODEL : CB023  
 DIMENSIONS : 7' X 4' 8" X 8'  
 USE ZONE : 19' X 16' 8"  
 AGES : 5-12 + BEYOND



### Moab Arch

MODEL : CB017  
 DIMENSIONS : 16' 10" X 5' 6" X 8' 8"  
 USE ZONE : 28' 10" X 17' 6"  
 AGES : 5-12 + BEYOND



### Rock Slide

MODEL : CB019  
 DIMENSIONS : 18' X 5' 2" X 10' 2"  
 USE ZONE : 30' X 17' 2"  
 AGES : 5-12





### Cave Rock

MODEL : CB011  
DIMENSIONS : 8' 6" X 5' 4" X 5'  
USE ZONE : 20' 6" X 17' 4"  
AGES : 2-12



### Approach Boulder

MODEL : CB025  
DIMENSIONS : 10' 6" X 5' 4" X 3' 2"  
USE ZONE : 22' 6" X 17' 4"  
AGES : 2-5



### Pinnacle Boulder


MODEL : CB026  
DIMENSIONS : 3' X 2' 11" X 6'  
USE ZONE : 15' X 14' 11"  
AGES : 5-12



### Mini Arch


MODEL : CB015  
DIMENSIONS : 8' 1" X 3' 9" X 3' 3"  
USE ZONE : 20' 1" X 15' 9"  
AGES : 2-5





**Cairn Tower**

MODEL : CB012  
DIMENSIONS : 12' 4" X 7' 11" X 10' 6"  
USE ZONE : 24' 4" X 19' 11"  
AGES : 5-12



Meadow Park • Lyons, CO

# PERFORMANCE BOULDERS

Make no mistake: our performance boulders aren't just super-sized versions of playground climbers. Our roots are in rock climbing and we call on that experience to match any rock type or natural formation to create boulder problems at specific grades. Every boulder features sculpted routes for beginner to advanced and professional climbers, with optional inserts for modular handholds. These are world-class boulders worthy of world-class climbers and provide unprecedented opportunity for growth and challenge.



Wardle Fields Regional Park • Bluffdale, UT

[idsculpture.com](http://idsculpture.com)

**Colossus**

MODEL : PB001

DIMENSIONS : 25' 5" X 13' 1" X 11'

USE ZONE : 37' 5" X 25' 1"

AGES : 5-12 + BEYOND



**Paradise Boulder**

MODEL : PB002

DIMENSIONS : 26' 2" X 15' 11" X 11'-8"

USE ZONE : 38' 2" X 27' 11"

AGES : 5-12 + BEYOND





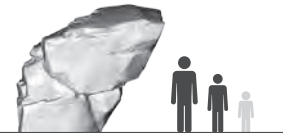
## The Mighty Fin

MODEL : PB004  
DIMENSIONS : 14' 2" X 2' 10" X 9' 2"  
USE ZONE : 26' 2" X 14' 10"  
AGES : 5-12 + BEYOND



## Kalispell Boulder *medium*

MODEL : PB008  
DIMENSIONS : 11' 8" X 7' 8" X 10' 1"  
USE ZONE : 23' 8" X 19' 8"  
AGES : 5-12 + BEYOND



## Montana Special

MODEL : PB005  
DIMENSIONS : 14' 10" X 6' 9" X 10' 6"  
USE ZONE : 26' 10" X 18' 9"  
AGES : 5-12 + BEYOND







## Pagosa Boulder

MODEL : PB006

DIMENSIONS : 12' 3" X 7' 9" X 10'

USE ZONE : 24' 3" X 19' 9"

AGES : 5-12 + BEYOND





## Real World Inspiration

At ID Sculpture, we pride ourselves on the realism of our climbing boulders and walls. How do we do this? Through an intimacy with rock, climbing and natural places. For example, when you look at some of our climbing boulders, you'll see distinctive pocket formations. These features are known to geologists and climbers as *huecos*.

One of the most renowned places to see them is the famous Hueco Tanks of South Texas, a climbing area that ID Sculpture founder Ian Glas helped pioneer in the early 1990s. Affectionately referring to themselves as "dirtbags," Ian and his crew lived in their cars and tents to keep expenses low and spent years developing new routes and bouldering problems. This "real rock" experience gives ID Sculpture boulders a level of authenticity hard to find anywhere else.



### Moab Boulder

MODEL : PB010  
DIMENSIONS : 15' X 8' 6" X 9' 11"  
USE ZONE : 26' 1" X 20' 7"  
AGES : 5-12 + BEYOND





# EXPLORE

When you want to step off the beaten path and a catalog of options just won't cut it, ID Sculpture is ready to help you discover something new. With far-reaching capabilities in custom design, unique materials and innovative solutions, we provide the resources to help you plot your own course.

# CUSTOM DESIGN

ID Sculpture's proprietary materials and methods put custom design within reach for any project. Whether you want a particular species of TerraCriter in your playground, features that match local rock formations, or an immersive theme that ties to your community, our design team will work with you to make it a reality. No idea is too big or too small. Our designers love a challenge and have an unprecedented turnaround time.





Inspiration Park • Bellevue, WA

## ART + EXHIBITS

In addition to playgrounds, ID Sculpture offers a wide range of fabrication services to the public art world. From iconic gateway features to interactive sculptures, we are a trusted source for large-scale art fabrication. We work with artists and stakeholders to help them develop their vision, taking the idea from concept to installation. We also help with material testing, construction coordination, and engineering along the way to ensure the flawless execution of your project.

# RETAINING WALLS

At ID Sculpture, we know that every site is unique. We have pioneered the art of fusing play environments with dynamic sites. By leveraging structural elements like retaining walls and buildings, we turn infrastructure into opportunity. Let us help you explore the options for your site to create an immersive play experience.







Inspiration Park • Bellevue, WA

# COMBINATIONS

When it comes to linked play, ID Sculpture offers you the components and flexibility you need to create custom configurations. We offer custom rope net climbers and connections on every piece of equipment, and offer a few basic combinations to get you started designing your own.



## Kenosha Pass

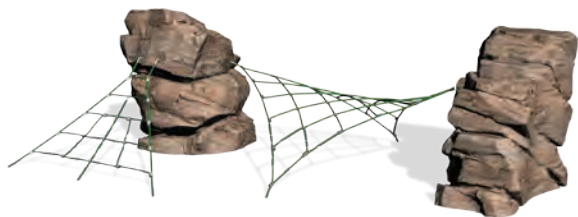
MODEL : CMB002

DIMENSIONS : 27' 1" X 6' 8" X 5' 10"

USE ZONE : 39' 1" X 18' 8"

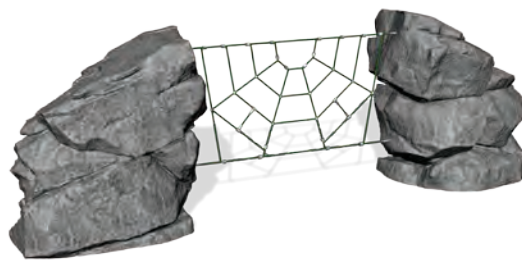
AGES : 5-12





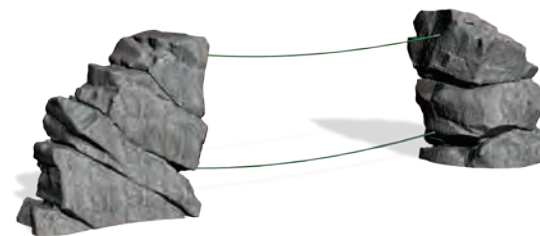
**Maroon Bells**

MODEL : CMB007  
 DIMENSIONS : 21' 1" X 13' 7" X 6' 6"  
 USE ZONE : 33' 1" X 25' 7"  
 AGES : 5-12



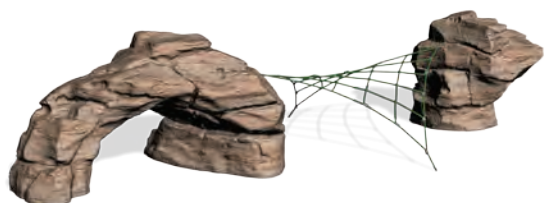
**Spanish Peaks**

MODEL : CMB008  
 DIMENSIONS : 20' 2" X 5' 4" X 6' 6"  
 USE ZONE : 32' 2" X 17' 4"  
 AGES : 5-12



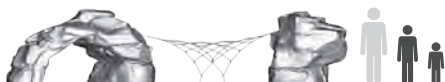
**Independence Pass**

MODEL : CMB006  
 DIMENSIONS : 24' 2" X 5' 1" X 6' 6"  
 USE ZONE : 36' 2" X 17' 1"  
 AGES : 5-12



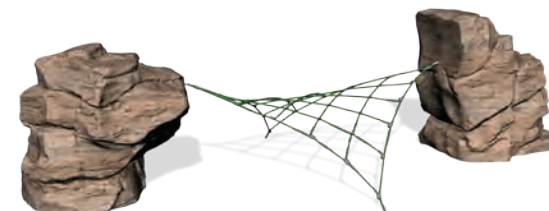
**Mesa Verde**

MODEL : CMB003  
 DIMENSIONS : 26' 8" X 11' 9" X 5' 10"  
 USE ZONE : 38' 8" X 23' 9"  
 AGES : 5-12



**Ragged Wilderness**

MODEL : CMB005  
 DIMENSIONS : 32' X 11' 6" X 5' 8"  
 USE ZONE : 44' X 23' 6"  
 AGES : 5-12



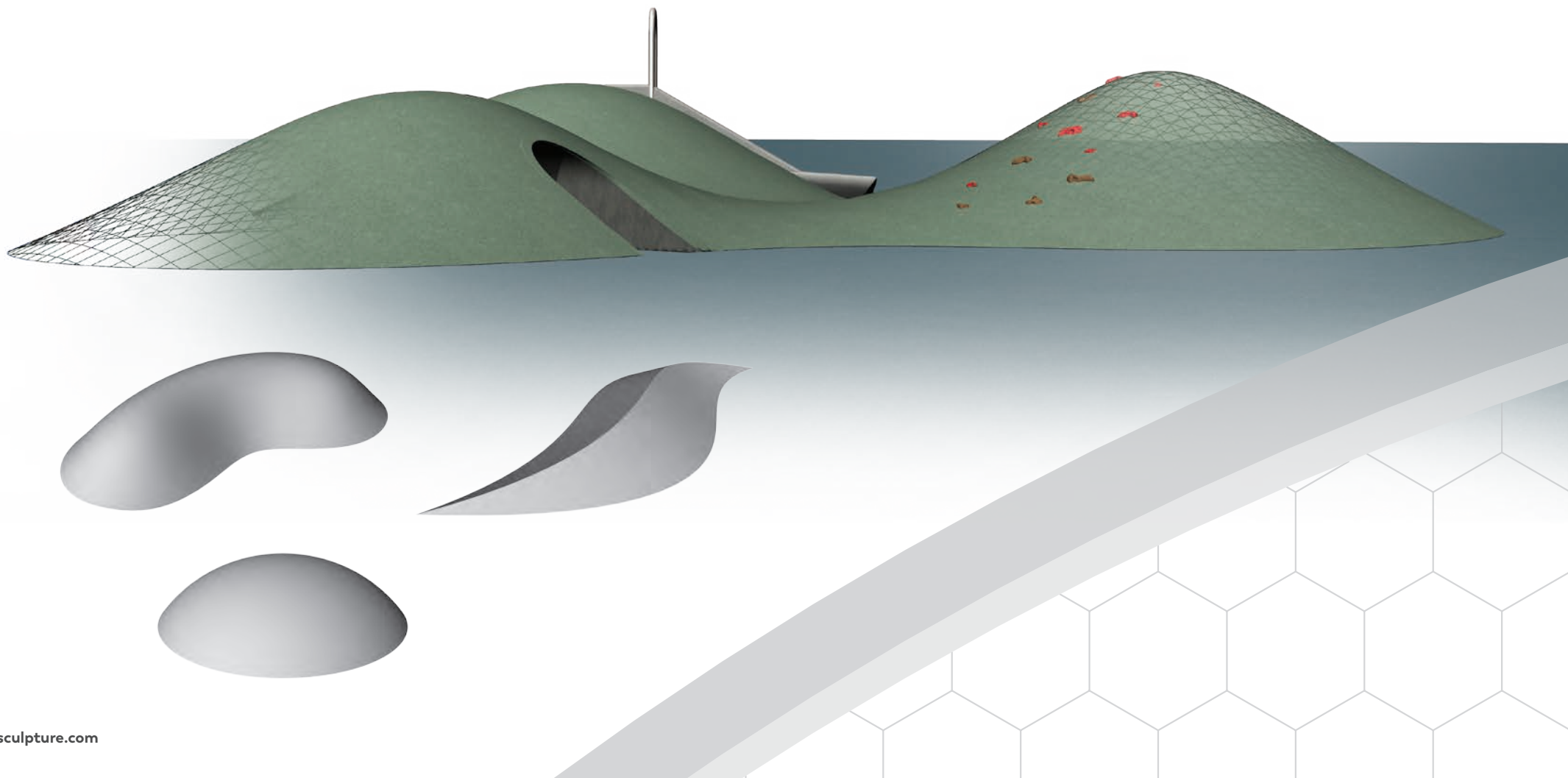
**West Elk Traverse**

MODEL : CMB009  
 DIMENSIONS : 23' 1" X 11' 5" X 6'  
 USE ZONE : 35' 1" X 23' 5"  
 AGES : 5-12



# LAND FORMING

Ever wish you could shape your landscape? Our proprietary process allows you to create accurate, 3-dimensional shapes like berms and mounds that seamlessly integrate into your play area and are suitable for turf or poured in place surfacing systems.





# TECHNICAL SPECS



## COMPOSITION

ID Sculpture uses a high performance composite technology to construct our products. Our typical structures use a digitally fabricated armature encapsulated with a specially formulated shell of glass fiber reinforced concrete (GFRC). The GFRC structural shell is hand sculpted and finished. The result is a product that's lightweight yet durable, rich in textural detail, and architecturally accurate so you can plan your project down to the smallest detail. We can even design our products to interface with existing site features, such as retaining walls or landscape features.





## S A F E T Y

Safety is at the heart of all we do. Compliance with nationally recognized standards provides a safer environment for children and the general public.

All of our playground features conform to ASTM F1487, the "Standard Consumer Safety Performance Specification for Playground Equipment for Public Use" as well as the US Consumer Product Safety Commission (CPSC) Guidelines. ID Sculpture has Certified Playground Safety Inspectors (CPSI) in house to ensure that designs are safe and compliant. We proudly offer a range of products certified by the International Playground Manufacturers Association, Inc. (IPEMA).

While we're proud of our commitment to safety, it goes beyond regulations. We draw on our decades of experience as parents, climbers, and adventurers to design, build and test our products. We understand the risks inherent in outdoor play and climbing, and look for ways to mitigate them at every step of the process.



*In the interest of playground safety, the International Play Equipment Manufacturers Association (IPEMA) provides a Third Party Certification Service whereby a designated independent laboratory, TUV SUD America Inc., (TUV), validates an equipment manufacturer's certification of conformance to ASTM F1487, Standard Consumer Safety Performance Specification for Playground Equipment for Public Use, except sections 7.1.1, 10 and 12.6.1. The use of the corresponding logo in ID Sculpture's catalog signifies that ID Sculpture has received written validation from the independent laboratory that the product(s) associated with the use of the logo conforms to the requirements of the indicated standard. Check the IPEMA website ([www.ipema.org](http://www.ipema.org)) to confirm product validation.*



## DURABILITY + WARRANTY

While most conventional playground equipment is replaced, on average, every ten years; ID Sculpture believes in a higher bar. The life expectancy of our outdoor sculptural concrete products is estimated to be 50 years.

That's because everything we build is made to last. Our proprietary concrete was developed through years of experience in the harshest of climates - from the bitter cold of our home in Gunnison, Colorado to the blazing heat of Mesa, Arizona. ID Sculpture's proprietary concrete mix is the toughest in the industry and is designed for easy maintenance and repair. All ID Sculpture products are warrantied for 10 years.

Meadow Park • Lyons, CO

[idsculpture.com](http://idsculpture.com)







## INSTALLATION

All of our projects are designed and fabricated with installation in mind. We understand the realities of construction sites and have learned how to properly execute even the most demanding of installations. Whether your site is a clean retail space or a public plaza, ID Sculpture has the experience to do it right every time.

If you prefer, you can install yourself. Sculptures come with either an integral footing or are designed for a simple, site built slab on grade. Your sculpture will come with everything you need to install it, including mechanical connection points, hardware, an easy to understand installation guide and an Operations and Maintenance manual.







Creative people are curious, flexible, persistent, and independent with a tremendous spirit of adventure and a love of play.”

- Henri Matisse



# ID SCULPTURE

PLAY. CLIMB. EXPLORE.



# BEN SHAFFER RECREATION

973-663-2021

[www.benshaffer.com](http://www.benshaffer.com)

